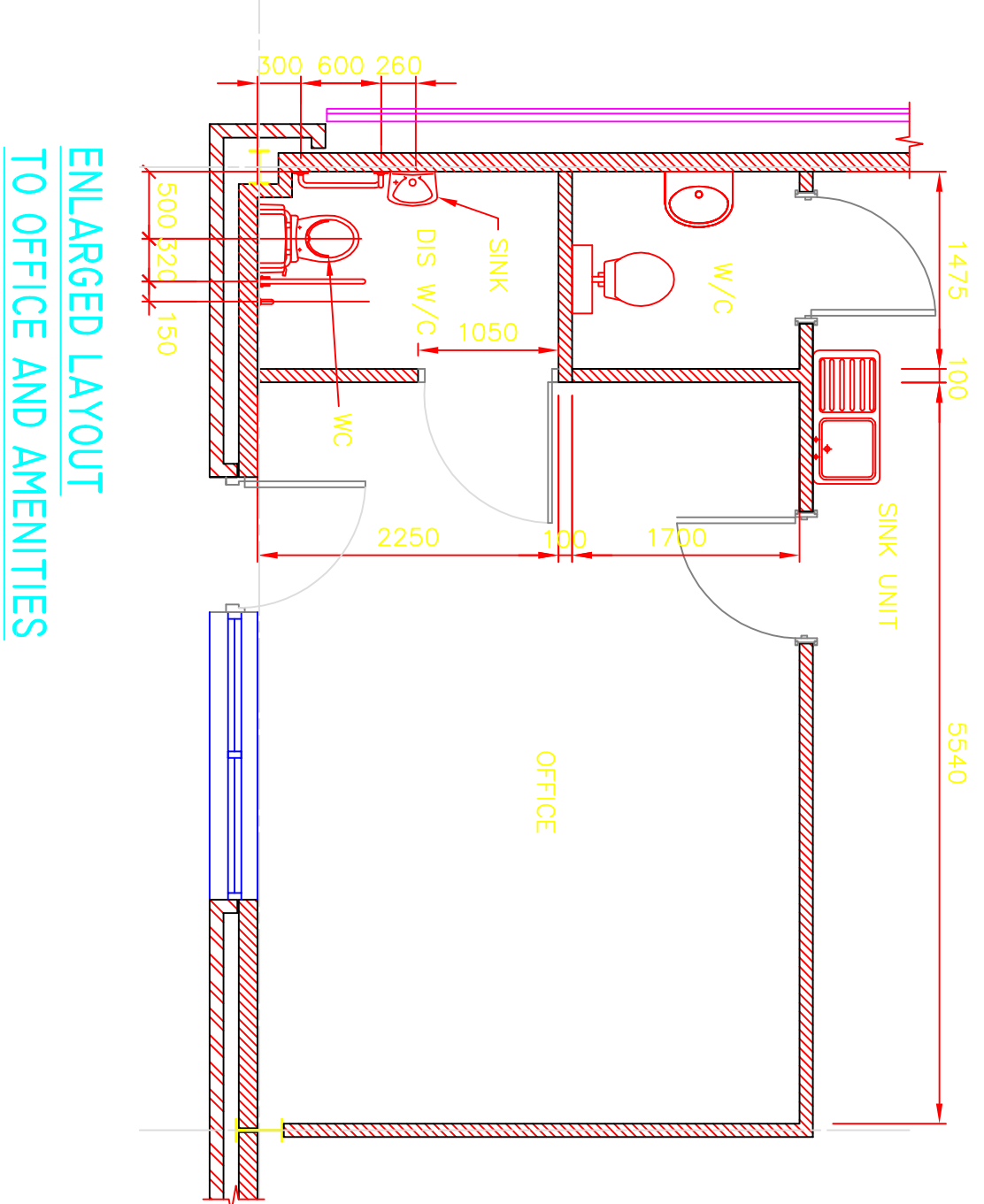
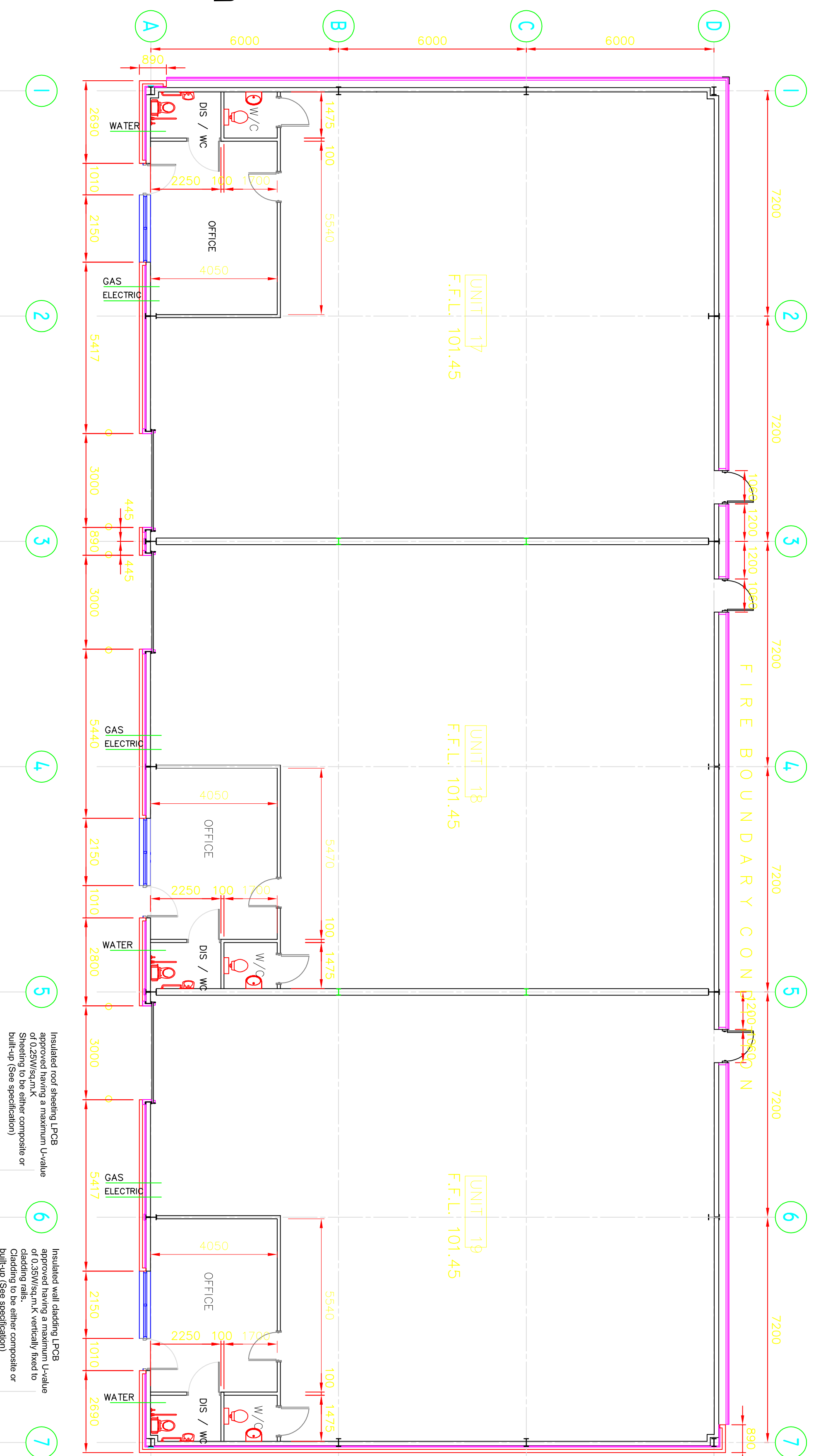
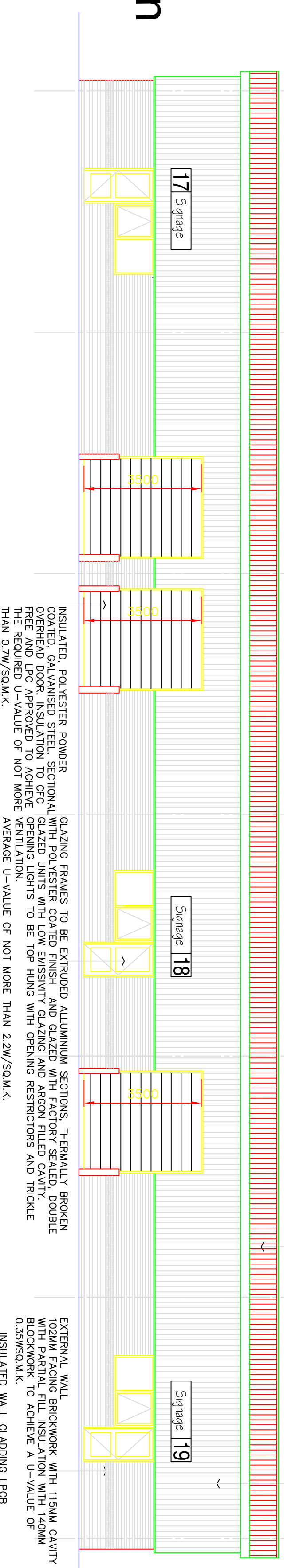


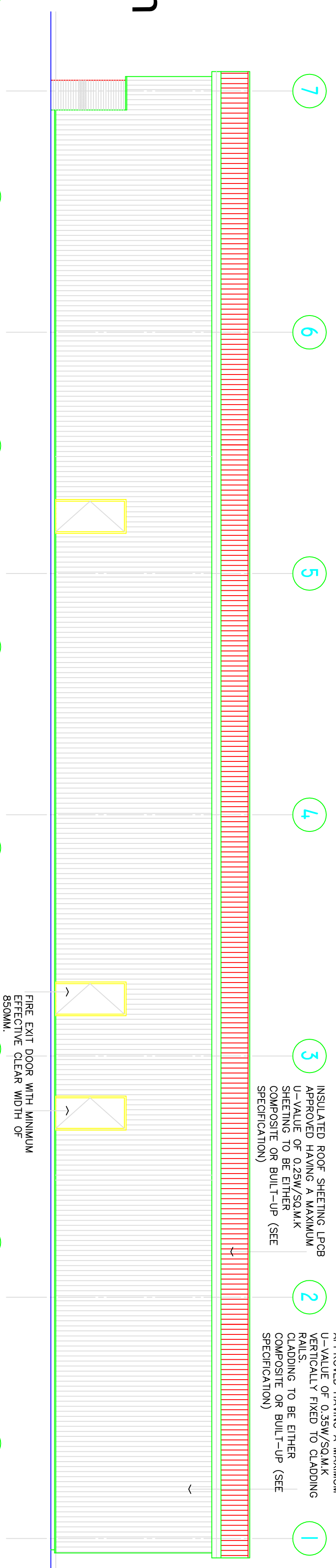
Units 17 - 19 Ground Floor Plan



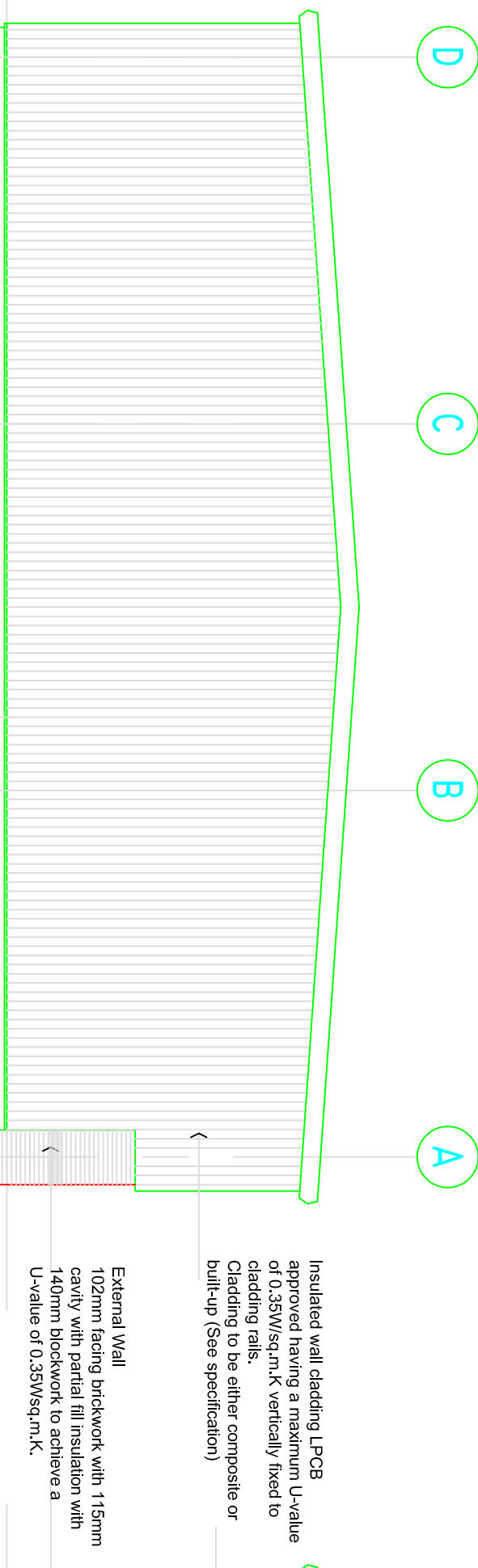
Units 17 - 19 Front Elevation



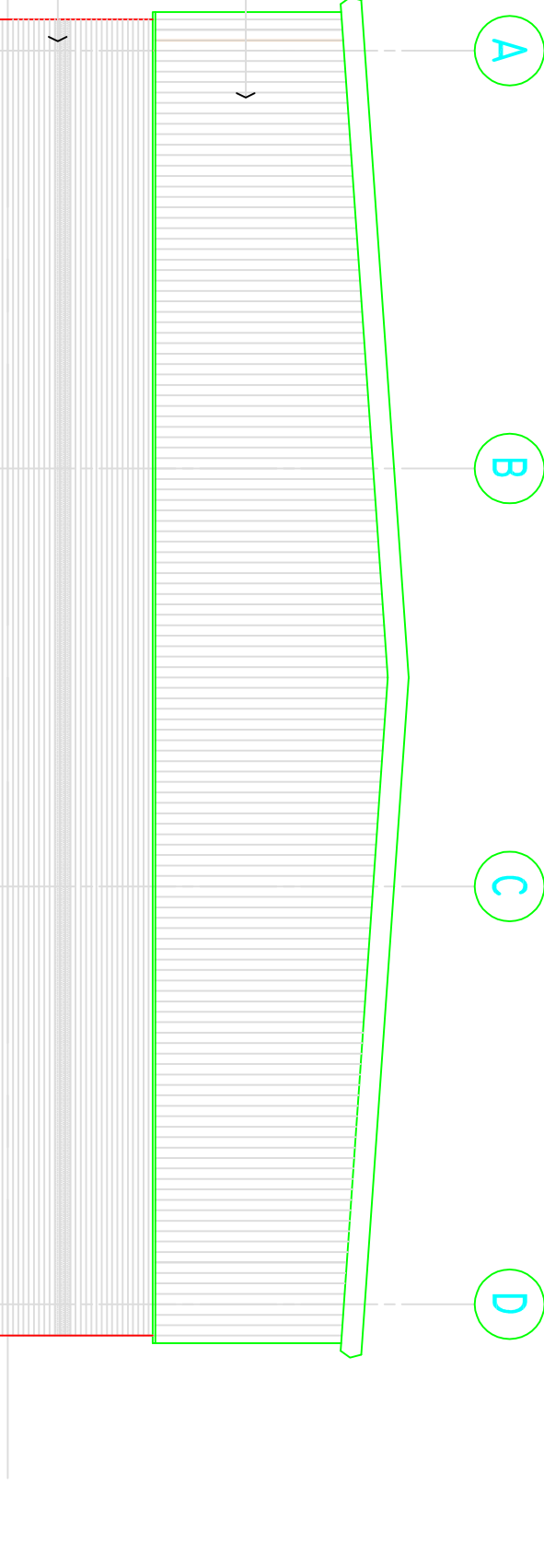
Units 17 - 19 Rear Elevation



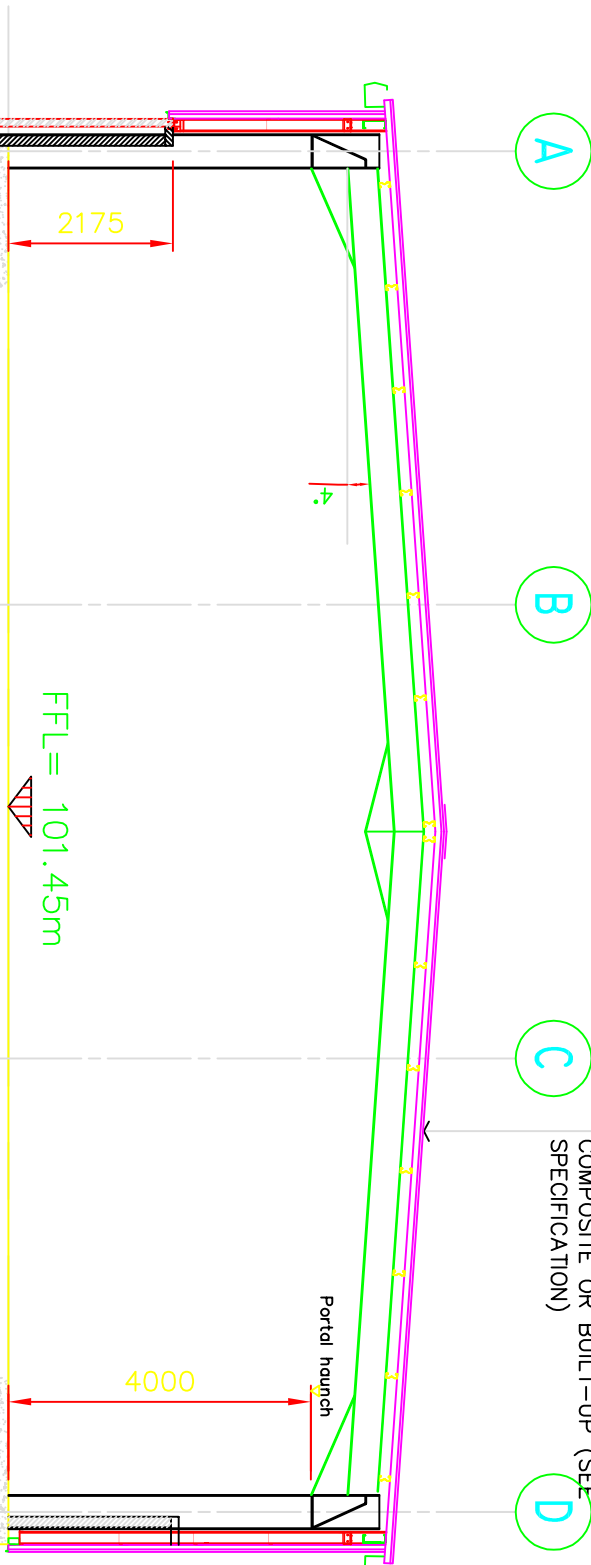
Unit 17 - Side Elevation



Unit 19 - Side Elevation



Units 17-19 Typical Section



NO	DESCRIPTION	DATE	BY	CHECKED	STATUS
1	ISSUED FOR PERMIT	07/07/2006	AI	SS	ISSUED
2	FOR CONSTRUCTION	07/07/2006	AI	SS	FOR CONSTRUCTION
3	FOR CONSTRUCTION	07/07/2006	AI	SS	FOR CONSTRUCTION
4	FOR CONSTRUCTION	07/07/2006	AI	SS	FOR CONSTRUCTION
5	FOR CONSTRUCTION	07/07/2006	AI	SS	FOR CONSTRUCTION
6	FOR CONSTRUCTION	07/07/2006	AI	SS	FOR CONSTRUCTION
7	FOR CONSTRUCTION	07/07/2006	AI	SS	FOR CONSTRUCTION
8	FOR CONSTRUCTION	07/07/2006	AI	SS	FOR CONSTRUCTION
9	FOR CONSTRUCTION	07/07/2006	AI	SS	FOR CONSTRUCTION
10	FOR CONSTRUCTION	07/07/2006	AI	SS	FOR CONSTRUCTION

CONSTRUCTION ISSUE

Graham Schofield Associates
CONSULTING CIVIL AND STRUCTURAL ENGINEERS
72 Bulwer Road, Lyndal, Auckland 1061, New Zealand
Tel: 011 772 459288 Fax: 011 772 459284
Email: info@gsa.co.nz

client
M.J.FELLOWS FOR
DELTA DEVELOPMENTS

project
PROPOSED INDUSTRIAL UNITS
GREEN LANE
GROSVENOR GRANGE - WARRINGTON

title
PROPOSED PLAN, ELEVATIONS
AND SECTION - UNITS 17 - 19
(FORMERLY UNIT 3)

drawn: DMJ checked: SS
date: Jan 07 date: Jan 07
scale: 1/100 AI

drawing number: 2006 - 008 - A04
D